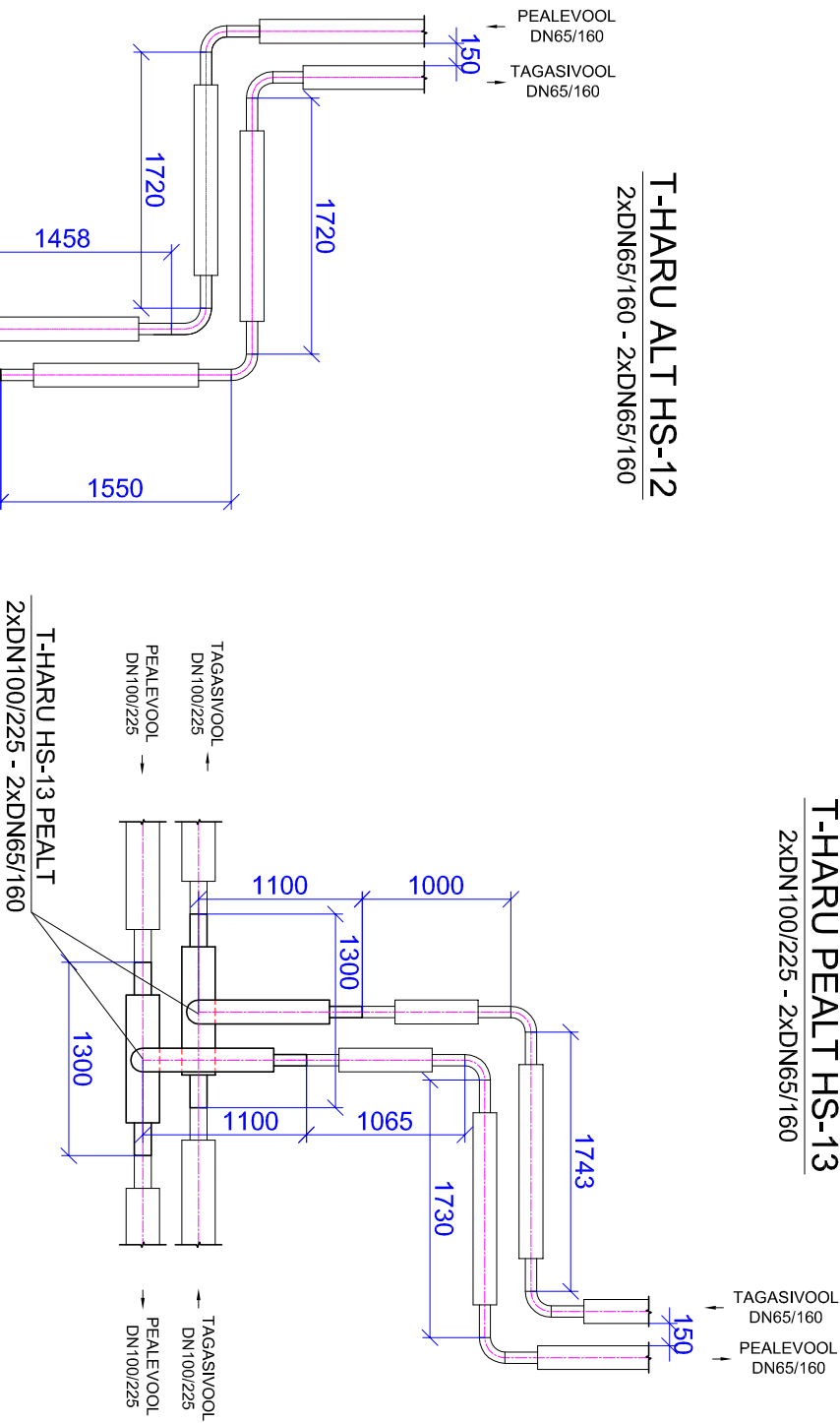
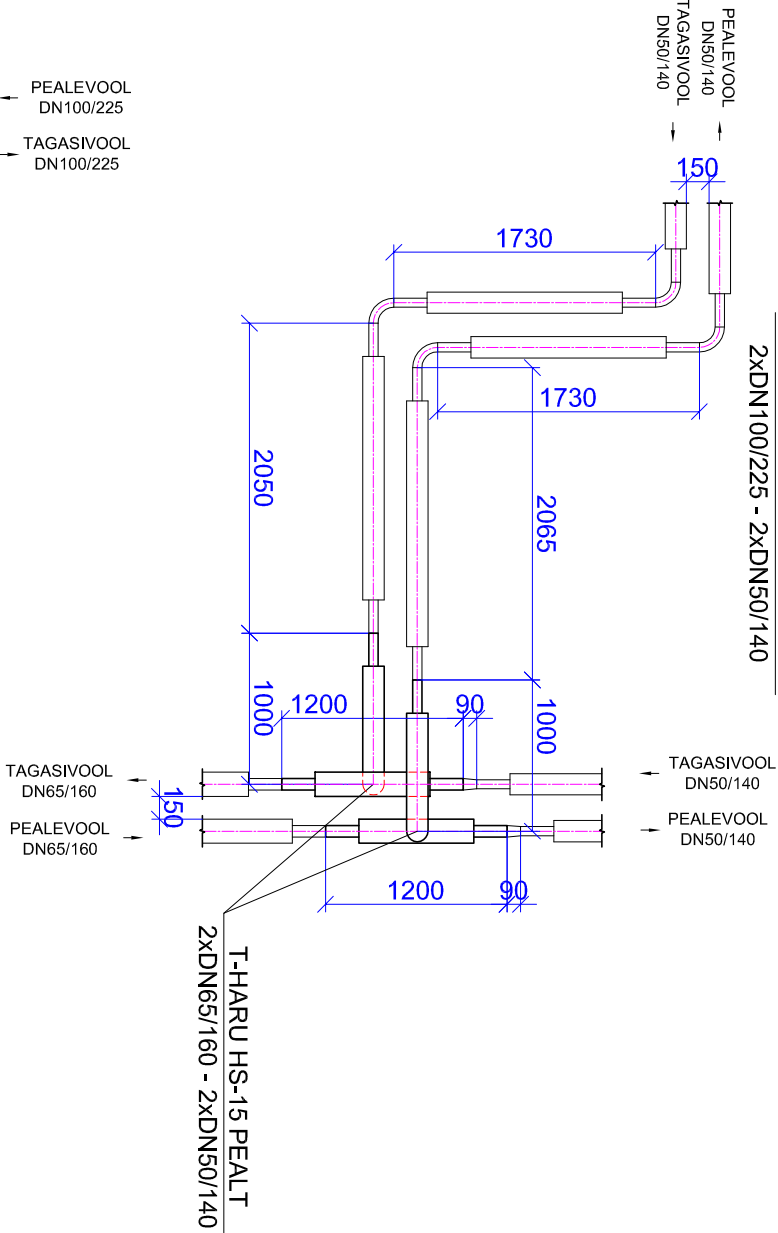


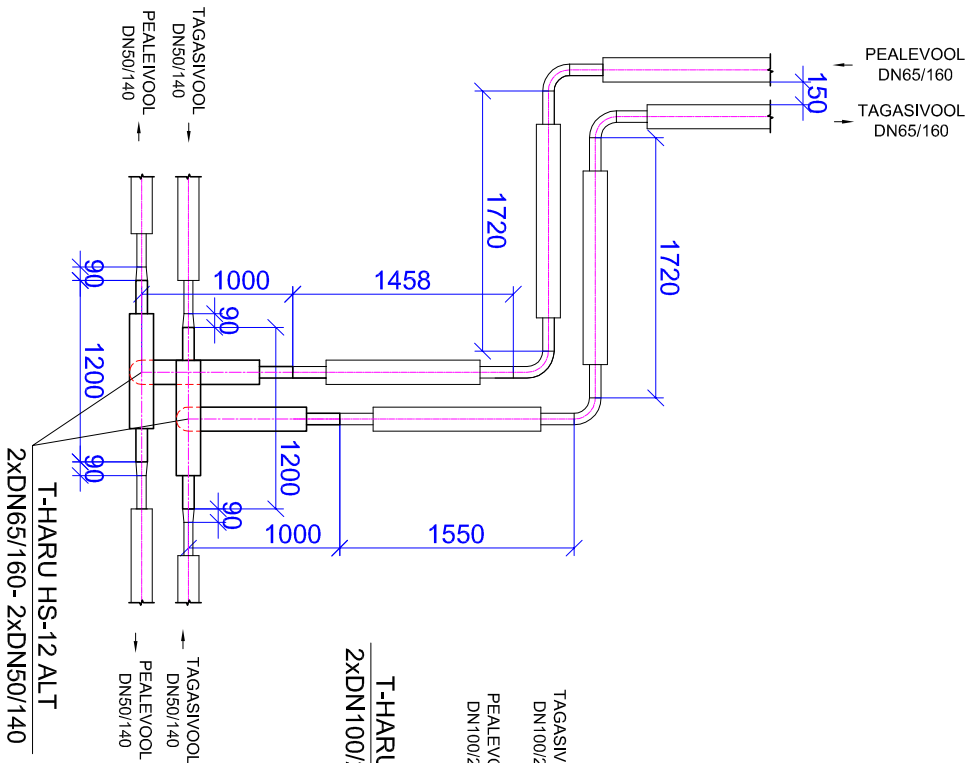
T-HARU PEALT HS-13  
2xDN100/225 - 2xDN65/160



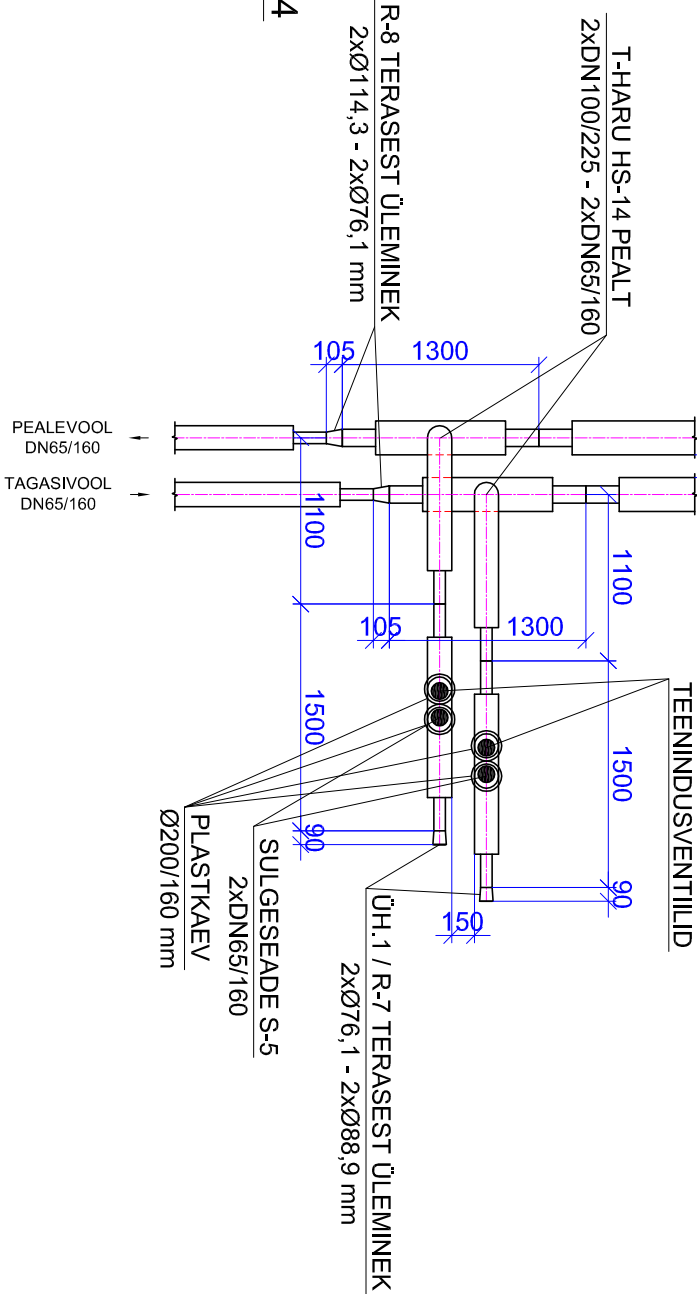
T-HARU PEALT HS-15  
2xDN100/225 - 2xDN50/140




T-HARU ALT HS-12  
2xDN65/160 - 2xDN65/160



T-HARU PEALT HS-14  
2xDN100/225 - 2xDN65/160



...	...	...	...
KUUPÄEV	MUUDATUSE NR.	TEOSTAS	ALKIRI
 <b>HeatConsult</b>		...	
HeatConsult OÜ reg. nr 12049882 Kärsäpõllu 6-31, 11412 Tallinn tel: +372 58 00 39 89 info@heatconsult.ee		Tallinn: EG Ehitus AS Radtsit tee 7, Soodevahe, 75322 Rae vald reg. nr 11097051 tel: +372 6 580 240 faks: +372 6 580 241	
Inseener	V. Kislenskova	27.06.2013	
Kontrollis	A. Ledvanov	27.06.2013	
Fail	13-030 ST-7 Hargnemissõlmed.dwg		
		Töö nr:	13-030
		Lehti nr:	ST-7.4
		Saadlunn:	TP
		Möökalva:	1:50
Objekti asukoht: NISSI TEE, METSA TÄNAV, RIISPERE ALEVIK, NISSI VALD, HARJUMAA			
Töö nimetus: RIISPERE ALEVIKU SOOJUSTRASSIDE REKONSTRUEERIMINE			
Joonise nimetus: HARGNEMISSLÕMEDE SKEEMID			